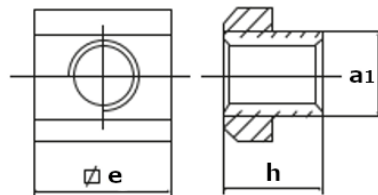
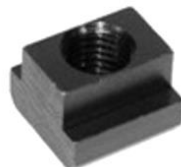


TUERCA EN T DIN 508

- Material: Tratado



NORMA ANTIGUA

REF:	a	e	h	a ₁
4560110400	M-4x5	9	6.5	4.8
4560110500	M-5x6	10	8	5.7
4560110600	M-6x8	13	10	7.7
4560110800	M-8x10	15	12	9.7
4560111000	M-10x12	18	14	11.7
4560111200	M-12x14	22	16	13.7
4560111400	M-14x16	25	18	15.7
4560111600	M-16x18	28	20	17.7
4560111800	M-18x20	32	24	19.7
4560112000	M-20x22	35	28	21.7
4560112200	M-22x24	40	32	23.7
4560112400	M-24x28	44	36	27.7
4560112700	M-27x32	50	40	31.5
4560113000	M-30x36	54	44	35.5
4560113600	M-36x42	65	52	41.6
4560114200	M-42X48	75	60	47.5
4560114800	M-48X54	85	70	53.6

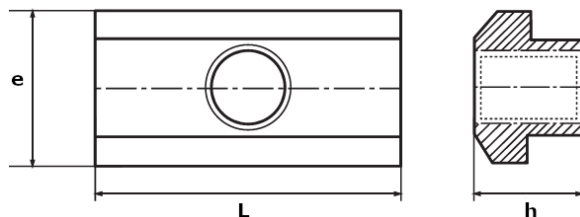
REF:	a	e	h	a ₁
4560120800	M-8X12	18	14	11.7
4560121000	M-10X14	22	16	13.7
4560121100	M-10X16	25	18	15.7
4560121200	M-12X16	25	18	15.7
4560121300	M-12X18	28	20	17.7
4560121400	M-14X18	28	20	17.7
4560121600	M-16X20	32	24	19.7
4560121700	M-16X22	35	28	21.7
4560122000	M-20X24	40	32	23.7
4560122100	M-20X28	44	36	27.7
4560122400	M-24X32	50	40	31.5
4560122500	M-24X36	54	44	35.5
4560123000	M-30X42	65	52	41.6

TUERCA EN T LARGA DIN 508 L

- Material: Tratado



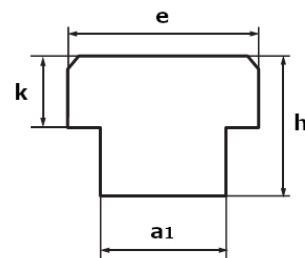
REF:	a	e	L	h
4560130600	M-6X8	13	26	12
4560130800	M-8X10	15	30	12
4560131000	M-10X12	18	36	14
4560131200	M-12X14	22	44	16
4560131400	M-14X16	25	50	18
4560131600	M-16X18	28	56	20
4560131800	M-18X20	32	64	24
4560132000	M-20X22	35	70	28
4560132200	M-22X24	40	80	32
4560132400	M-24X28	44	88	36
4560132700	M-27X32	50	100	40
4560133000	M-30X36	54	108	44



TUERCA EN T CIEGA DIN 508 C

- Para fabricar tuercas fuera de norma.

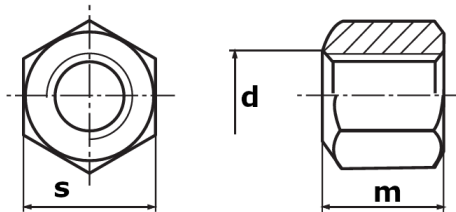
REF:	a	e	h	a ₁	k
4560140800	8	13	10	7.8	6
4560141000	10	15	12	9.7	6
4560141200	12	18	14	11.7	7
4560141400	14	22	16	13.7	8
4560141600	16	25	18	15.7	9
4560141800	18	28	20	17.7	10
4560142000	20	32	24	19.7	12
4560142200	22	35	28	21.7	14
4560142400	24	40	32	23.7	16
4560142800	28	44	36	27.7	18
4560143200	32	50	40	31.7	20
4560143600	36	54	44	35.6	22
4560144200	42	65	52	41.6	26
4560144800	48	75	60	47.5	30
4560145400	54	85	70	53.5	35



TUERCA ALTA

DIN 6330 B

- Material: Tratado

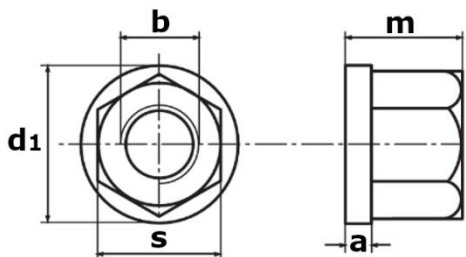


REF:	d	m	s
4560160600	M-6	8	9
4560160800	M-8	12	13
4560161000	M-10	15	17
4560161200	M-12	18	19
4560161400	M-14	21	22
4560161600	M-16	24	24
4560161800	M-18	27	27
4560162000	M-20	30	30
4560162200	M-22	33	32
4560162400	M-24	36	36
4560162700	M-27	40	41
4560163000	M-30	45	46
4560163600	M-36	54	55
4560164200	M-42	63	65
4560164800	M-48	72	75

TUERCA CON COLLARÍN

DIN 6331

- Material: Tratado

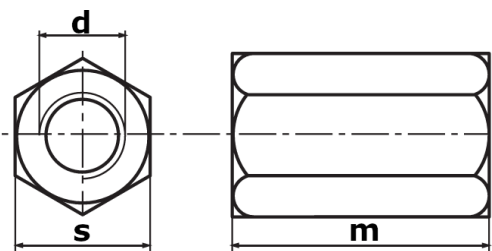


REF:	d	s	m	d1	a
4560170600	M-6	10	9	14	3
4560170800	M-8	13	12	18	3.5
4560171000	M-10	17	15	22	4
4560171200	M-12	19	18	25	4
4560171400	M-14	22	21	28	4.5
4560171600	M-16	24	24	31	5
4560171800	M-18	27	27	34	5
4560172000	M-20	30	30	37	6
4560172200	M-22	32	33	40	6
4560172400	M-24	36	36	45	6
4560172700	M-27	41	40	51	8
4560173000	M-30	46	45	58	8
4560173600	M-36	55	54	68	10
4560174200	M-42	65	63	80	12
4560174800	M-48	48	72	92	14

TUERCA DE PROLONGACIÓN

DIN 6334

- Material: Tratado



REF:	d	s	m
4560180600	M-6	10	18
4560180800	M-8	13	24
4560181000	M-10	17	30
4560181200	M-12	19	36
4560181400	M-14	22	42
4560181600	M-16	24	48
4560181800	M-18	27	54
4560182000	M-20	30	60
4560182200	M-22	32	66
4560182400	M-24	36	72
4560182700	M-27	41	81
4560183000	M-30	46	90
4560183600	M-36	55	108
4560184200	M-42	65	126