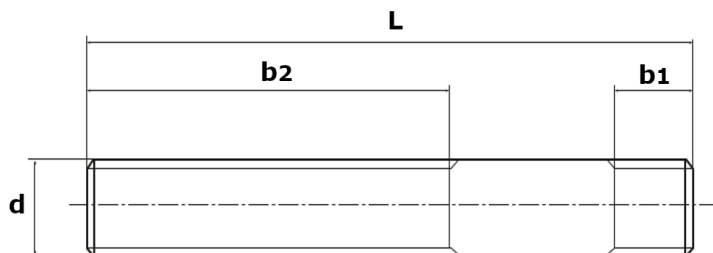


TENSORES DIN 6379

- Calidad: 8.8
- Forma de pedido: Tensor DIN 6379 d x L
- Ejemplo: Tensor DIN 6379 M-10 x 160

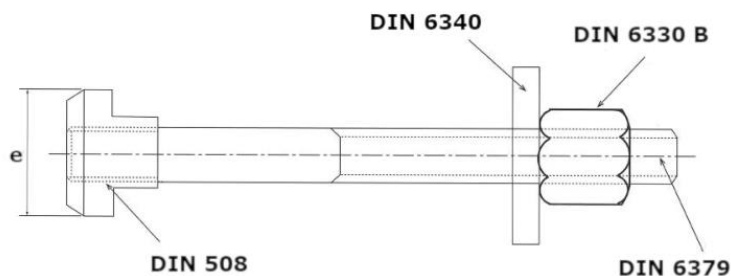


REF:	d	L	b ₁	b ₂
45600106040	M-6	40	9	20
45600106060		60		37
45600106070		70		50
45600106080		80		60
45600108040	M-8	40	11	20
45600108063		63		40
45600108085		85		55
45600108100		100		63
45600108125	M-10	125	13	75
45600108160		160		100
45600110050		50		25
45600110063		63		32
45600110080	M-12	80	15	50
45600110100		100		63
45600110125		125		75
45600110140		140		80
45600110160	M-14	160	17	100
45600110200		200		125
45600112050		50		25
45600112063		63		32
45600112080	M-16	80	19	50
45600112100		100		63
45600112125		125		75
45600112160		160		100
45600112200	M-18	200	23	125
45600112250		250		160
45600114063		63		32
45600114080		80		50
45600114100	M-20	100	27	63
45600114125		125		75
45600114160		160		100
45600114200		200		125
45600114250	M-22	250	31	160
45600116063		63		32
45600116080		80		50
45600116100		100		63
45600116125	M-24	125	35	75
45600116160		160		100
45600116200		200		125
45600116250		250		160
45600116315	M-27	315	39	180
45600116500		500		315
45600118080		80		50
45600118100		100		63
45600118125	M-30	125	43	75
45600118160		160		100
45600118200		200		125
45600118250		250		160
45600118315	M-36	315	51	180
45600118400		400		250
45600120080		80		32
45600120100		100		40
45600120125	M-42	125	59	50
45600120160		160		63
45600120200		200		75
45600120250		250		100
45600120315	M-48	315	67	180
45600120400		400		250
45600120500		500		315
45600122100		100		40
45600122125	M-54	125	75	50
45600122160		160		63
45600122200		200		75
45600122250		250		100
45600122315	M-60	315	83	180
45600122400		400		250
456001224100		100		40
456001224125		125		50
456001224160	M-66	160	91	63
456001224200		200		75
456001224250		250		100
456001224315		315		125
456001224350	M-72	350	99	180
456001224400		400		250
456001224500		500		315
456001224630		630		400
45600127125	M-78	125	107	75
45600127160		160		100
45600127200		200		125
45600127250		250		160
45600127315	M-84	315	115	180
45600127400		400		250
45600127500		500		315
45600130125		125		55
45600130160	M-90	160	123	100
45600130200		200		125
45600130250		250		160
45600130315		315		180
45600130400	M-96	400	131	250
45600130500		500		315
45600130700		700		500
45600136160		160		80
45600136200	M-102	200	139	125
45600136250		250		160
45600136315		315		200
45600136400		400		250
45600136500	M-108	500	147	315
45600136700		700		500
45600142315		315		200
45600142400		400		250
45600142500	M-114	500	155	315

REF:	d	L	b ₁	b ₂
45600120080	M-20	80	27	32
45600120100		100		63
45600120125		125		75
45600120160		160		100
45600120200	M-22	200	31	125
45600120250		250		160
45600120315		315		180
45600120400		400		250
45600120500	M-24	500	35	315
45600122100		100		45
45600122125		125		75
45600122160		160		100
45600122200	M-27	200	39	125
45600122250		250		160
45600122315		315		180
45600122400		400		250
456001224100	M-30	100	43	45
456001224125		125		75
456001224160		160		100
456001224200		200		125
456001224250	M-36	250	51	160
456001224315		315		180
456001224350		350		210
456001224400		400		250
456001224500	M-42	500	59	315
456001224630		630		400
45600127125		125		75
45600127160		160		100
45600127200	M-48	200	67	125
45600127250		250		160
45600127315		315		180
45600127400		400		250
45600127500	M-54	500	75	315
45600130125		125		55
45600130160		160		100
45600130200		200		125
45600130250	M-60	250	83	160
45600130315		315		180
45600130400		400		250
45600130500		500		315
45600130700	M-66	700	91	500
45600136160		160		80
45600136200		200		125
45600136250		250		160
45600136315	M-72	315	99	200
45600136400		400		250
45600136500		500		315
45600136700		700		500
45600142315	M-78	315	107	200
45600142400		400		250
45600142500		500		315

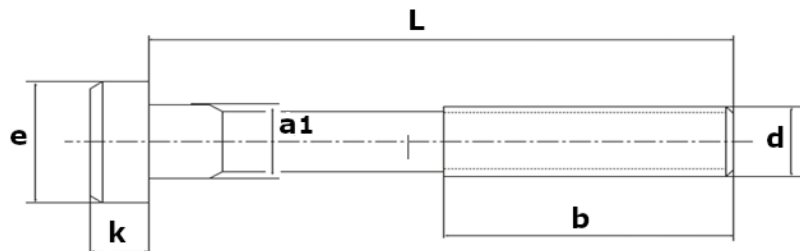
CONJUNTO TENSOR

- Formado por:
- DIN 508
 - DIN 6379
 - DIN 6340
 - DIN 6330 B



TENSOR FORJADO DIN 787

- Calidad: 8.8
- Forma de pedido: Tensor DIN 787 d x a x L
- Ejemplo: Tensor DIN 787 M-24 x 28 x 160



REF:	a	d	L	b	a ₁	k	e
45600310040	10	M-10	40	30	9,7	6	15
45600310063			63	45			
45600310100			100	60			
45600312050	12	M-12	50	35	11,5	7	18
45600312063			63	40			
45600312080			80	55			
45600312100			100	63			
45600312125			125	75			
45600312160			160	100			
45600312200			200	120			
45600313050	14	M-12	50	35	13,5	8	22
45600313063			63	40			
45600313080			80	55			
45600313100			100	63			
45600313125			125	75			
45600313160			160	100			
45600313200			200	120			
45600314063	16	M-14	63	45	15,5	9	25
45600314100			100	63			
45600314160			160	100			
45600314200			200	120			
45600314250			250	160			
45600316063	16	M-16	63	45	15,5	9	25
45600316080			80	55			
45600316100			100	63			
45600316125			125	75			
45600316160			160	100			
45600316200			200	125			
45600316250			250	160			
45600318063			18	M-16			
45600318080	80	55					
45600318100	100	63					
45600318125	125	75					
45600318160	160	100					
45600318200	200	125					
45600318250	250	160					

REF:	a	d	L	b	a ₁	k	e
45600320080	20	M-20	80	55	19,5	12	32
45600320100			100	63			
45600320125			125	85			
45600320160			160	110			
45600320200			200	125			
45600320250			250	160			
45600320315			315	180			
45600322080	22	M-20	80	55	21,5	14	35
45600322100			100	63			
45600322125			125	85			
45600322160			160	100			
45600322200			200	125			
45600322250			250	160			
45600322315			315	180			
45600324100	24	M-24	100	70	23,5	16	40
45600324125			125	85			
45600324160			160	110			
45600324200			200	125			
45600324250			250	160			
45600324315			315	180			
45600324400			400	250			
45600328100	28	M-24	100	70	27,5	18	44
45600328125			125	85			
45600328160			160	110			
45600328200			200	125			
45600328250			250	160			
45600328315			315	180			
45600328400			400	250			
45600330125			36	M-30			
45600330160	160	110					
45600330200	200	135					
45600330250	250	160					
45600330315	315	200					
45600330500	500	350					